



New generation Hyper E500. It has effectively increased the intensity of LED light source (22% ~ 143% or more)

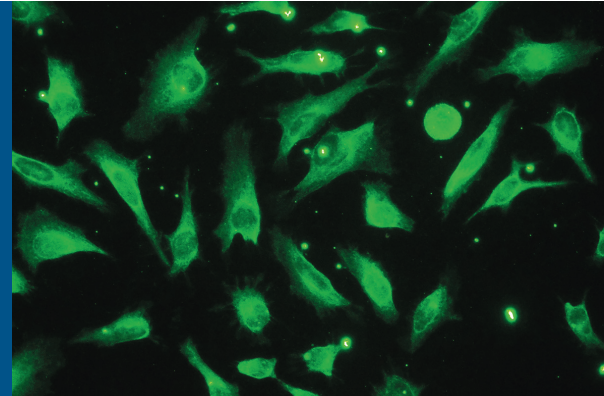


YODN Hyper E500 illuminator is a brand new light source specially made for fluorescence microscopes. Our illuminator equips the best LED light engine, produces spectrums that can fulfill most of the research lighting demands with its Broadband spectrums design methodology. It helps you conduct your works easily in an energy efficient way. It produces spectrums from 350 nm to 700 nm by latest LED technology, a true broadband illuminator that can support different fluorescence excitation, such as DAPI, GFP/FITC, mCherry/Texas Red, Cy5, and more. Besides, the LED long life characteristic makes you don't worry about the bulb replacement.

YODN Hyper E500 is the best choice for fluorescence microscope researches.

Hyper E500

Broadband Excitation Illuminator for Fluorescence Microscope



Features

Benefits

LED light source	Ecofriendly design, long life, instant on/off, stable light output, and free from light bulb change.
Broadband spectrum	Broadband Spectrum (350 nm – 700 nm), sufficient to use in all research occasions related to fluorescence, such as DAPI, GFP/FITC, mCherry/Texas Red, and Cy5 excitation.
Simple operation user interface	Easy operation and programmable.
Low photo-bleaching rate	LED cold light used; increase the fluorescence cell sample survival rate.
Reverse light output with liquid light guide	Small light engine and liquid light guide design, perfect for research laboratories with limited space.
Custom designed thermal system for LED light engine	Custom designed thermal system effectively control the light engine/illuminator at the best operation temperature ensure the illuminator performs at best conditions.

Hyper E500

Hyper E500

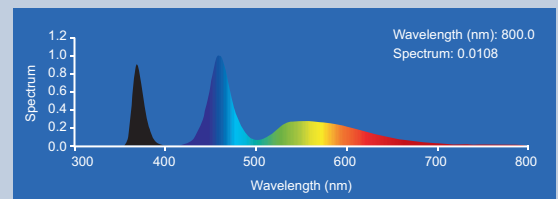
Broadband Excitation Illuminator for Fluorescence Microscope



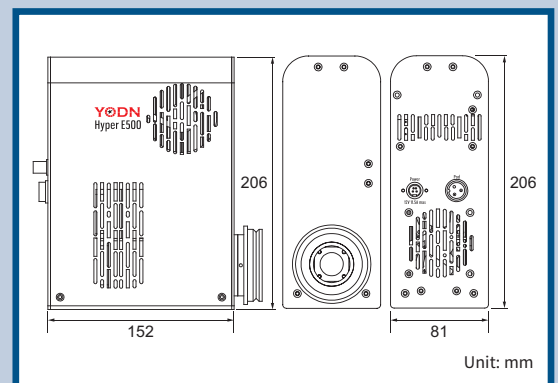
Specification

Wavelength range	350 ~ 700 nm
LED peaks/FWHM	365/20 nm, 460/40 nm, 560/80 nm
External power supply	Universal input 100-240 VAC, 50/60 Hz
Power consumption	138 W
LED on/off response time	1 ms
Control pad	On/off; LED intensity adjustment (all channel)
Dimensions (WxDxH) mm (Excluding rubber legs)	Illuminator: 81 x 152 x 206 Control pad: Ø56 x 46 Power adapter: 72 x 175 x 35
Weight	Approx. 2.6 kg (including power supply, control pad)
Warranty	Illuminator: 24 months
Standard configuration	Illuminator, control pad, adaptor (choose one), integrated power supply.
Option	1.5 m long, Ø3 mm liquid light guide/Attachment, collimators
Certifications	CE, RoHS

Spectrum



Dimensions



Configuration & Accessories Illustration

Standard configuration

Leica Nikon Evident (Olympus) Zeiss Motic

Adaptor (choose one)

Option

Liquid light guide/Attachment Leica Nikon Evident (Olympus) Zeiss Motic

Collimator

YODN Lighting Corp.

6F, No. 1, Creation Rd. II, Science-Based Industrial Park,
Hsin-chu City, 30077 Taiwan

TEL: +886-3-563-7218

FAX: +886-3-579-4581

Email: sales@yodnlighting.com



YODN WeChat



YODN Facebook